

Intellectual Property Committee

Annual report, FY18

Prepared by P. Shamsi, chair, Aug. 22, 2018

Annual meeting:

Date: Oct. 10, 2017

Meeting minutes:

- Keith Strassner updated the committee regarding the activities of the tech transfer office during FY17
- The committee considered a new streamlined process for the faculty to get an IP agreement with S&T on their inventions (details in the following section)
- Patent/technology transfer figures for FY17 are attached.

Policy Recommendation for Express License Initiative:

IP committee was very interested in a unified process for S&T faculty to be able to get easy IP agreements with S&T on their inventions/IPs. The main goal of this procedure is to promote entrepreneurial activities. Currently, this procedure is being investigated and pursued by the office of tech. transfer (Keith Strassner) and has not been approved yet. Hence, no more details are available at this point. However, a short description of the proposed procedure reads:

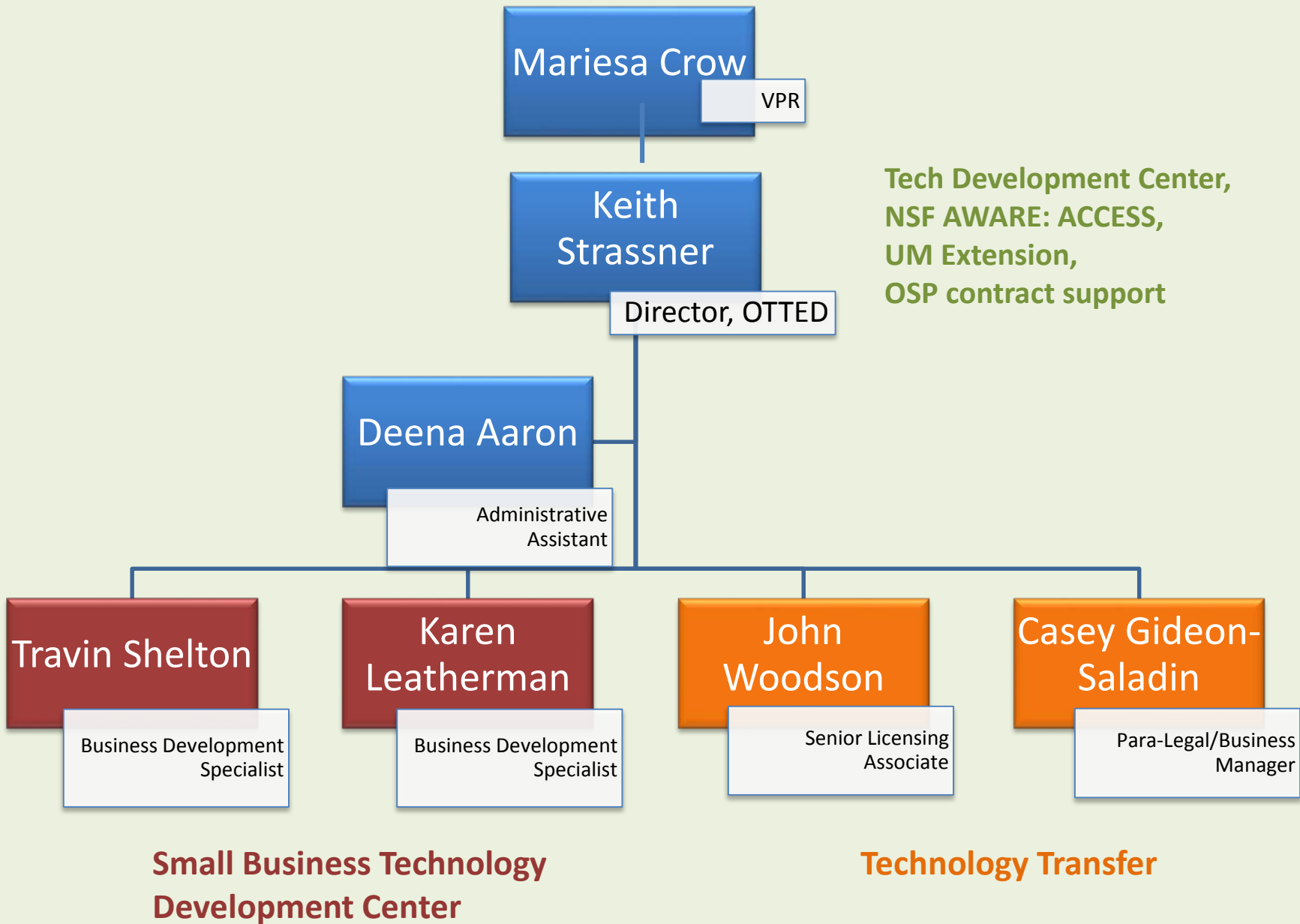
“University of Missouri’s Express License initiative is a fast track process that will allow faculty entrepreneurs to focus their time, efforts, and resources on the development and commercialization of University technology. This Express License is designed streamline the contract negotiation process and replace it with a license predefined set of terms and conditions. The terms are based on the idea of shared success and meant to encourage entrepreneurial efforts at the University of Missouri.”

Report to
Patent Committee
October 2017



Office of Technology Transfer and Economic Development

ecodevo.mst.edu | businessdevelopment.mst.edu | techtransfer.mst.edu



Funding

- **Technology Transfer**
 - Campus funding and portion of royalty income for office operations
 - Unreimbursed patent expenses from “System Share” of royalty income
 - Majority of royalty income will be used for Special Projects, Technology Acceleration Program
- **SBTDC**
 - UM Extension funding used as match on SBTDC statewide grant (declining contribution for last 3 years) currently 0.5FTE supplemented with campus funds
- **OTTED**
 - Campus funding and external grants (Missouri Enterprise, MTC MOBEC, USDA, NSF)

Results (FY17)

- **Technology Transfer**

- Royalty Income
 - Record Income \$540K
 - Strong steady increases each year
 - Over \$4MM since 2005
- Patents/Copyrights Issued
 - 15 in FY17
- Disclosures Received
 - 47 in FY17, consistently above 40
- Active License/options
 - 32 Licenses
 - 3 pending
- Active Case load
 - 173 cases
- Patent expenses
 - \$351K total patent expenses
 - \$235K unreimbursed
 - \$108K repaid by licensee

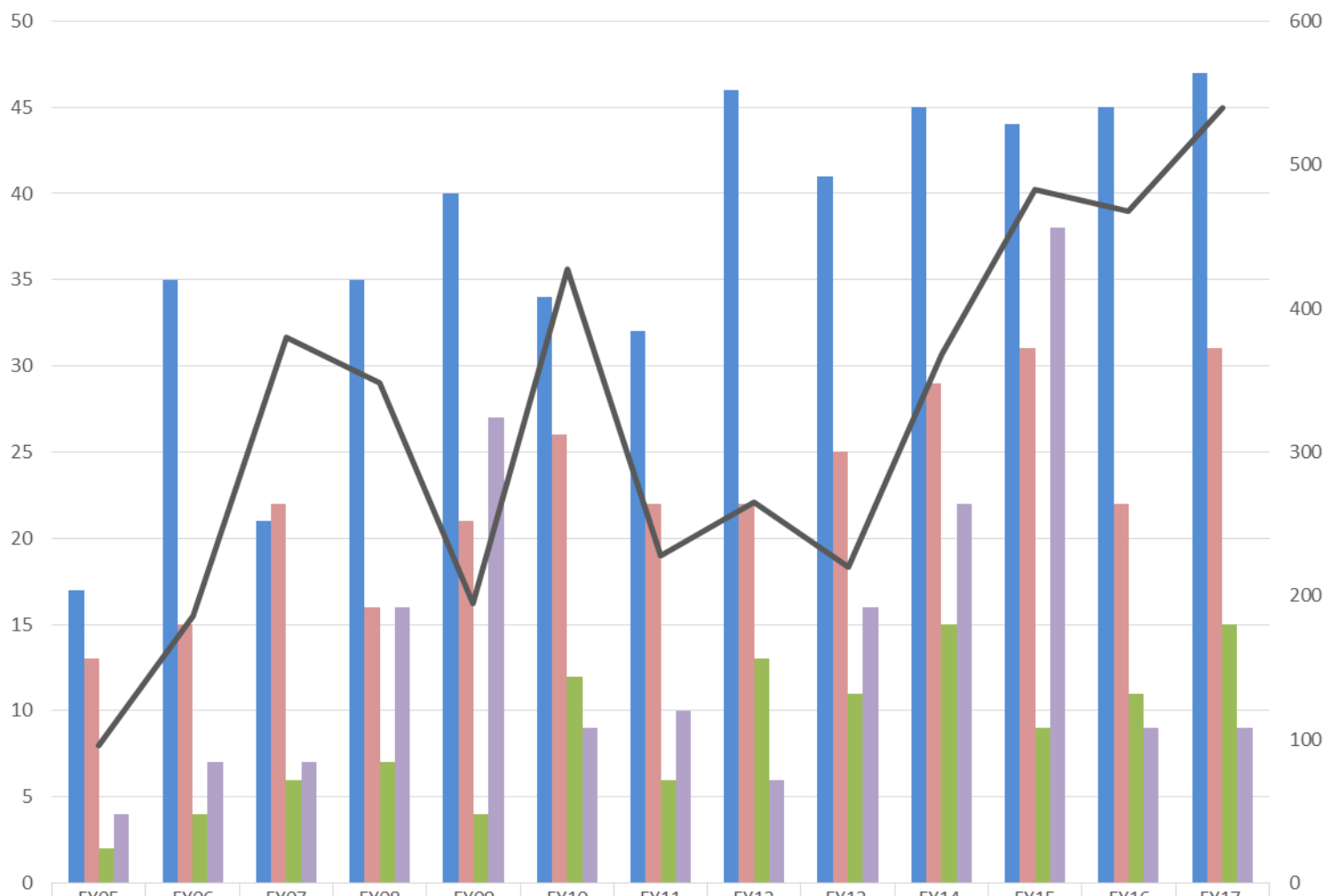
- **SBTDC YTD (Oct-Sept)**

- Investments
 - \$3.5M
- Jobs created
 - 122
- Business Starts
 - 17
- Active Clients
 - 322

- **Tech Development Center**

- 23 tenants (including virtual tenants)
- Building still operates at slight loss

S&T TTO Metric 2005-2017



	FY05	FY06	FY07	FY08	FY09	FY10	FY11	FY12	FY13	FY14	FY15	FY16	FY17
■ Invention Disclosures	17	35	21	35	40	34	32	46	41	45	44	45	47
■ Patents Filed	13	15	22	16	21	26	22	22	25	29	31	22	31
■ Patents/Copyrights Issued	2	4	6	7	4	12	6	13	11	15	9	11	15
■ License/Options	4	7	7	16	27	9	10	6	16	22	38	9	9
— Royalty Income (\$K)	96	186	380	348	195	427	228	265	220	368	483	468	540

TTO Comparable Schools

2015 last year available from AUTM (Based on 3 year 2013-2015 average)							
Metric	S&T	S&T Rank	Colorado School of Mines	Michigan Tech	New Jersey Tech	Stevens	Georgia Tech
Invention disclosures (3 year ave)	44	3	41	43	57	51	301
Disclosure/million in research (3 year ave)	1.25	2	0.69	0.62	0.53	1.78	0.40
Gross license income (3 year ave)	\$ 357,242.00	1	\$ 101,992.00	\$ 233,490.00	\$ 137,455.00	\$ 262,333.00	\$ 1,838,515.00
Ave income/licence (3 year ave)	\$ 25,157.89	2	\$ 4,031.30	\$ 9,120.70	\$ 4,789.37	\$ 131,166.50	\$ 27,730.24
License income/million research (3 year ave)	\$ 10,206.00	1	\$ 1,705.00	\$ 3,354.00	\$ 1,273.00	\$ 9,058.00	\$ 2,420.00
Patents issued (3 year ave)	11.3	2	8.7	4.7	20.3	6.0	92.0
Patents issued per disclosure	0.26	2	0.21	0.11	0.36	0.12	0.31

Opportunities/Challenges

- Diverse Royalty Income base;
 - non-chrome coatings
 - wound care
 - Super-capacitors
 - Microwave Imaging
- Invention disclosures remain high (FY18 already 19 new disclosures)
- Strong partnerships with our licensees (PPG will license 3 new technologies)
- Portfolio approach in managing patents
- New funding to support early stage technology development
- Non-Royalty producing Technology Transfer increasing
 - Consortium developed inventions – NERF, patent costs covered
 - “BPM-203” inventions – Upcharge on F&A is low (15%), none of the funds flow to the TTO
- Lack of Gap Funding source for faculty/graduate student start-ups
- Dramatic increase (\$125 → \$3,000+) in costs for provisional filings

Borate based Bio-Glass



License Income
Received to date:
\$590,819

Global market for
wound care is \$4
Billion

FDA approved and
launched in April
2017



22 US and Foreign patent applications

15 issued patents (12 US, 3 foreign)
7 pending (1 US, 6 foreign)

2 Licenses to mo-sci for human use

License to
RediHeal for
Veterinary
use

mo-sci direct
market Mirragen™
Advanced Wound
Matrix

Sublicense to Ultradent
for dental care

Sublicense to Prosidyan
for bone repair

Initial



6.6cm L x 7.5cm W x 2.5cm D

7 Days



6.0cm x 6.75cm x 1.5cm
~50% decrease in volume

127 Days



Resolved